



Automatisch Vervoer op de Last Mile Metropoolregio Rotterdam Den Haag

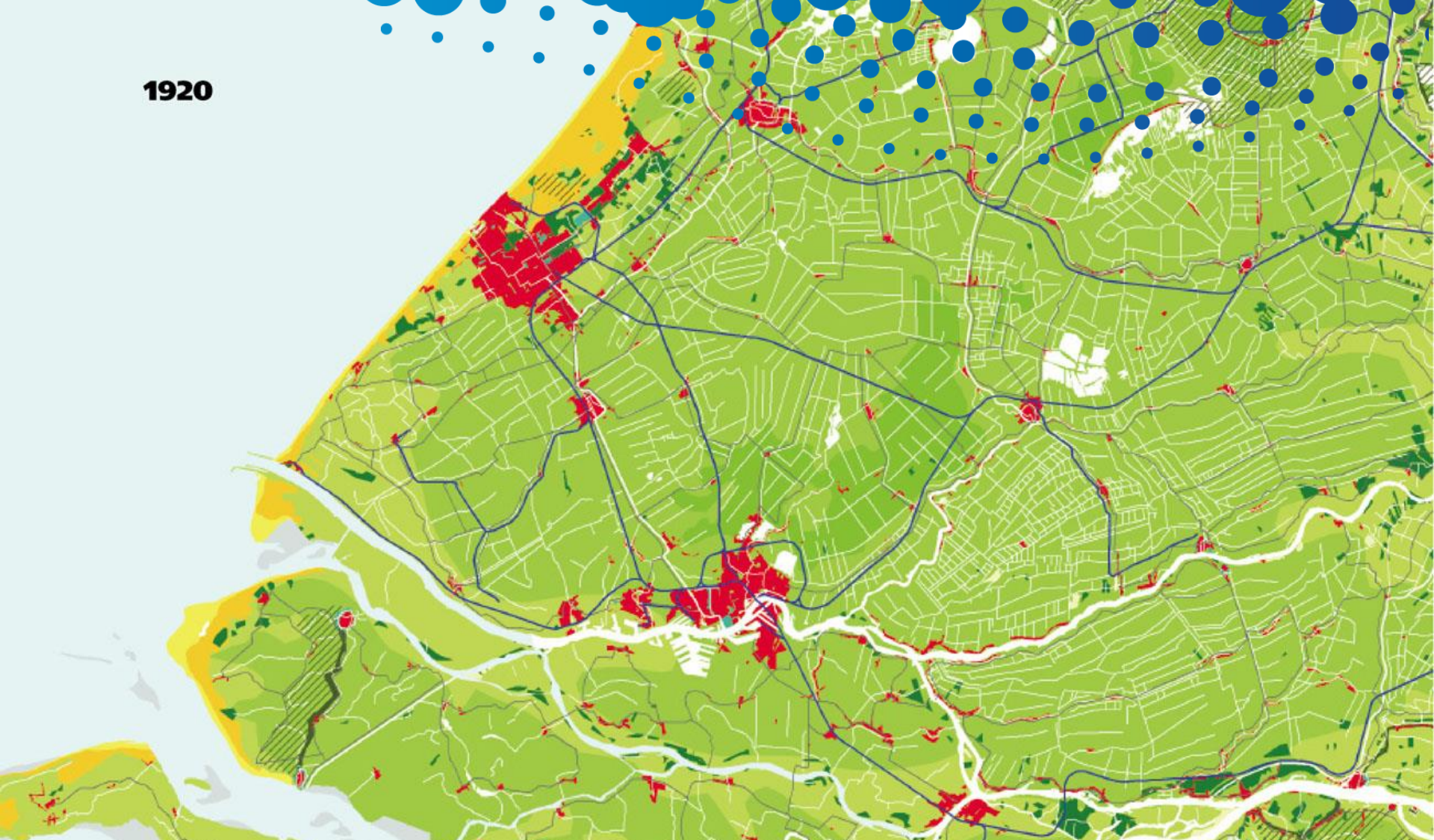
1890



Metropoolregio
Rotterdam Den Haag



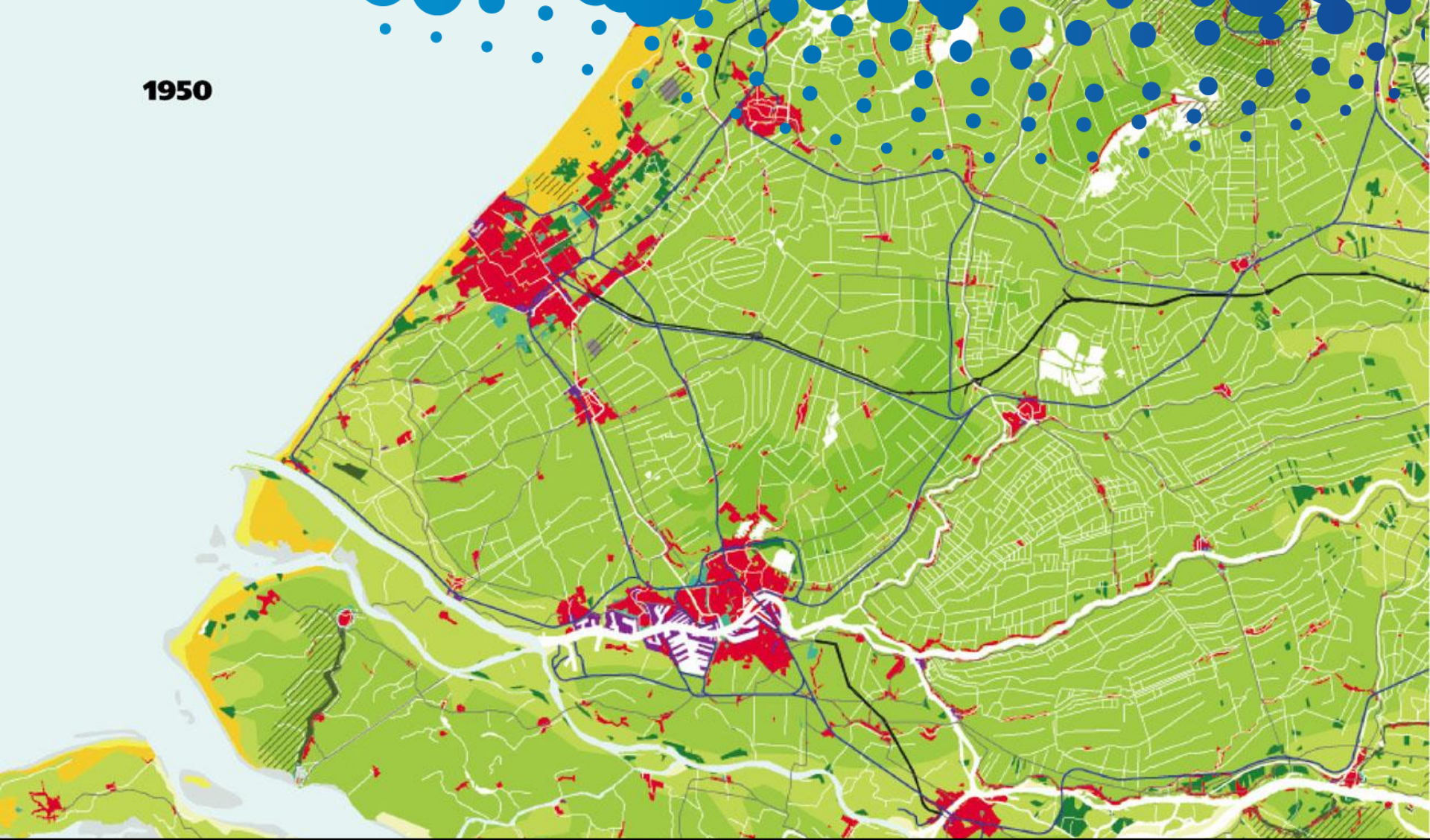
1920



Metropoolregio
Rotterdam Den Haag



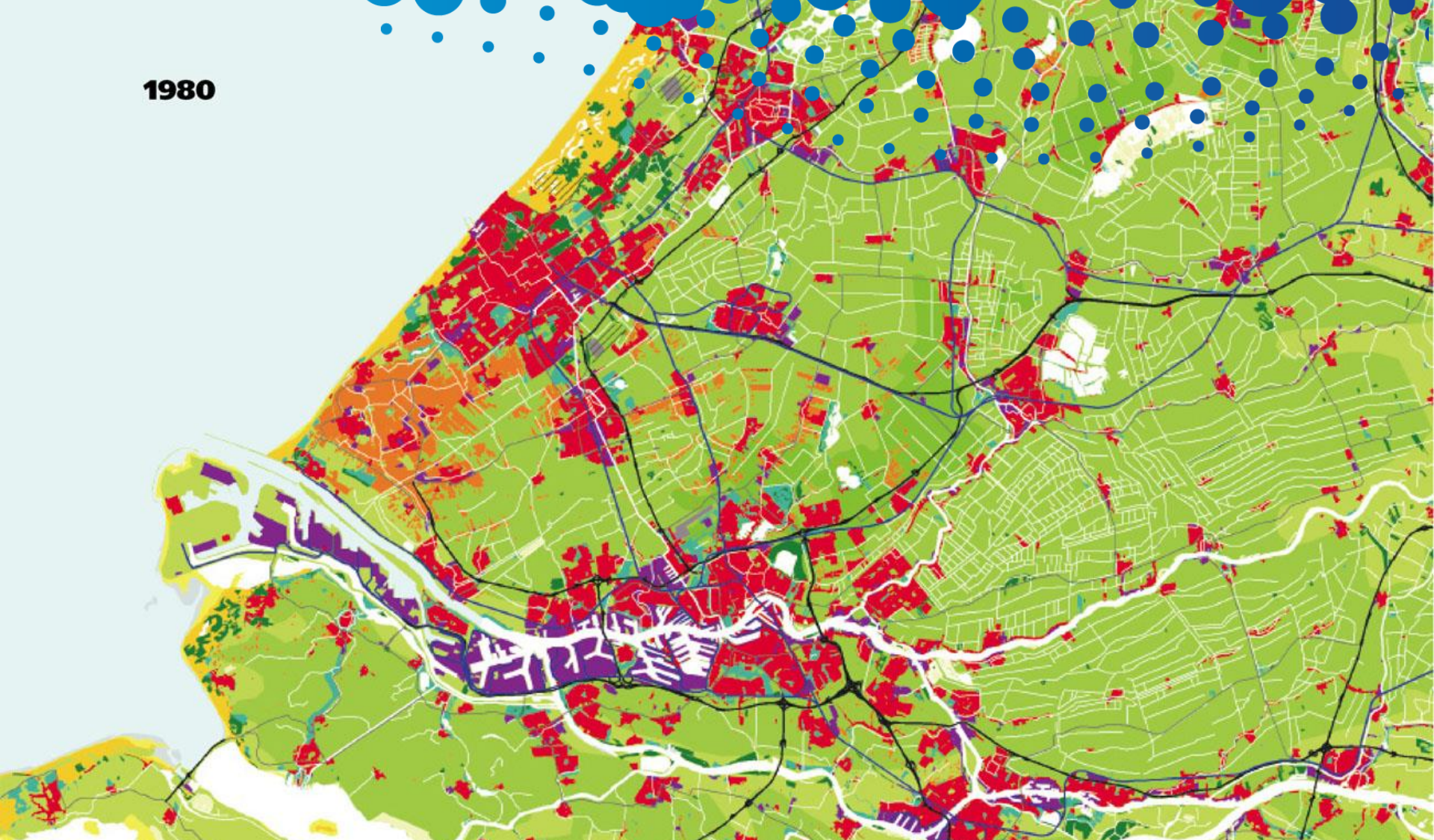
1950



Metropoolregio
Rotterdam Den Haag



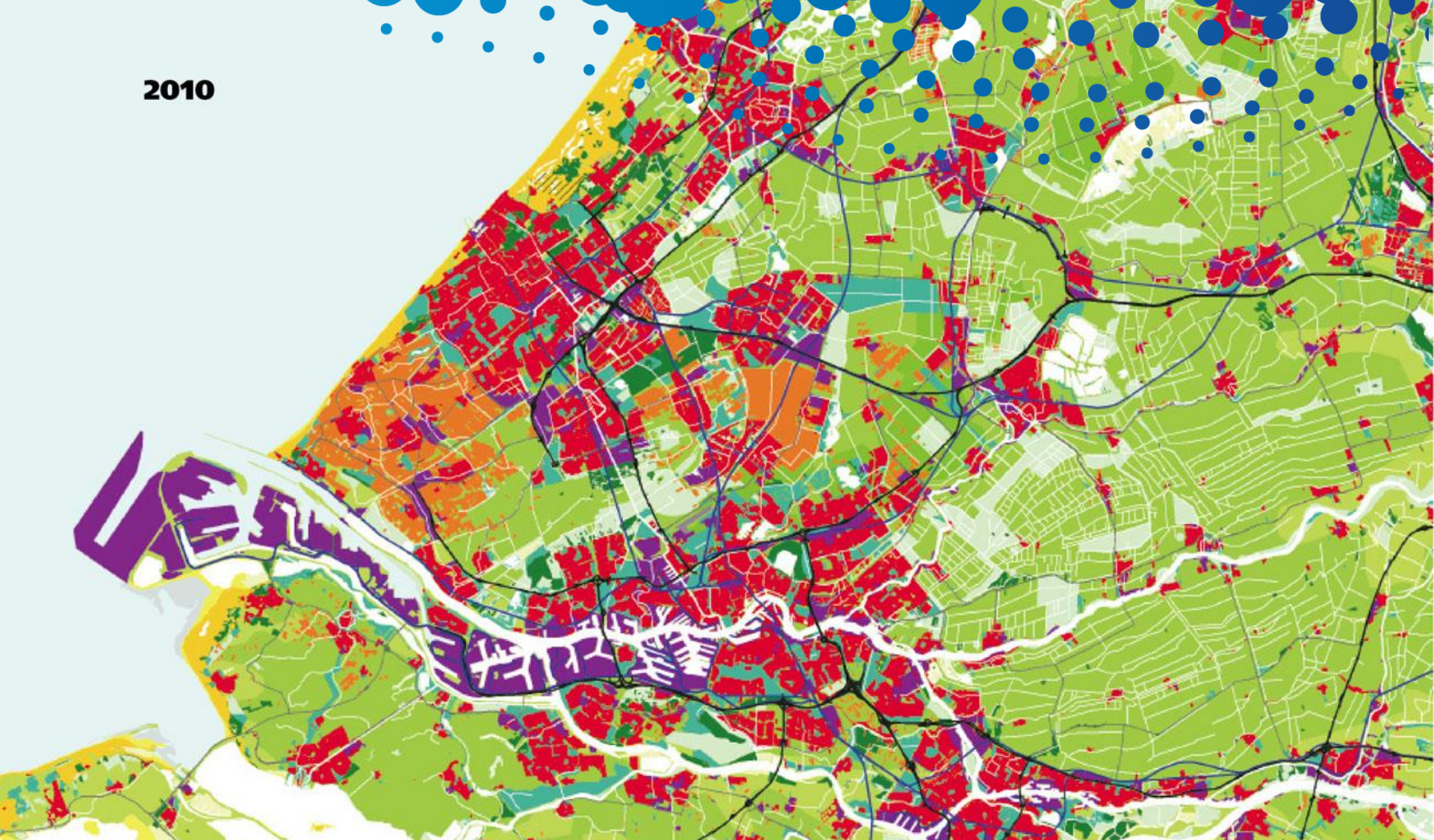
1980



Metropoolregio
Rotterdam Den Haag



2010



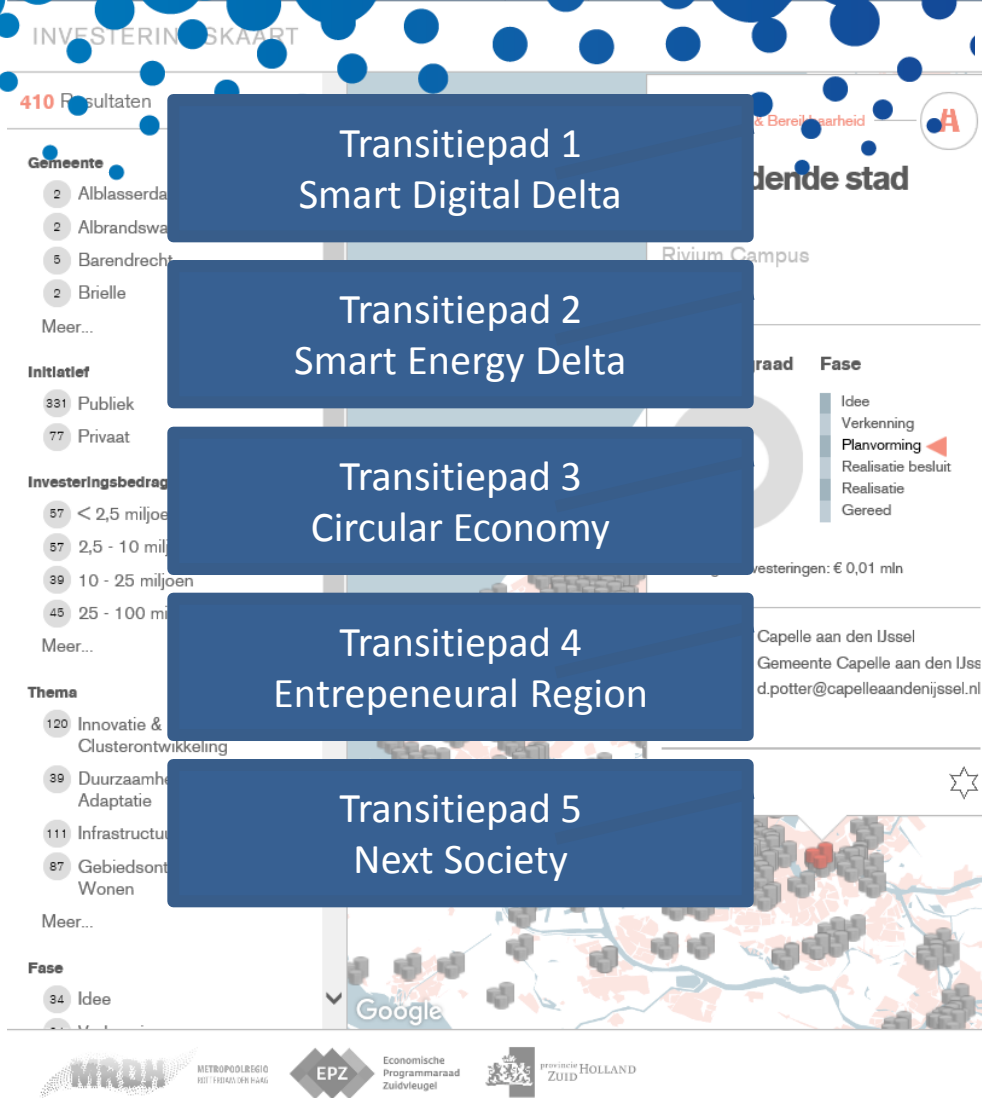
Metropoolregio
Rotterdam Den Haag

Laatste 50 jaar
enorme urbanisatie &
industrialisatie

Volgende 50 jaar
Next Economy grootste opgave
energietransitie + digitalisering



ROADMAP NEXT ECONOMY

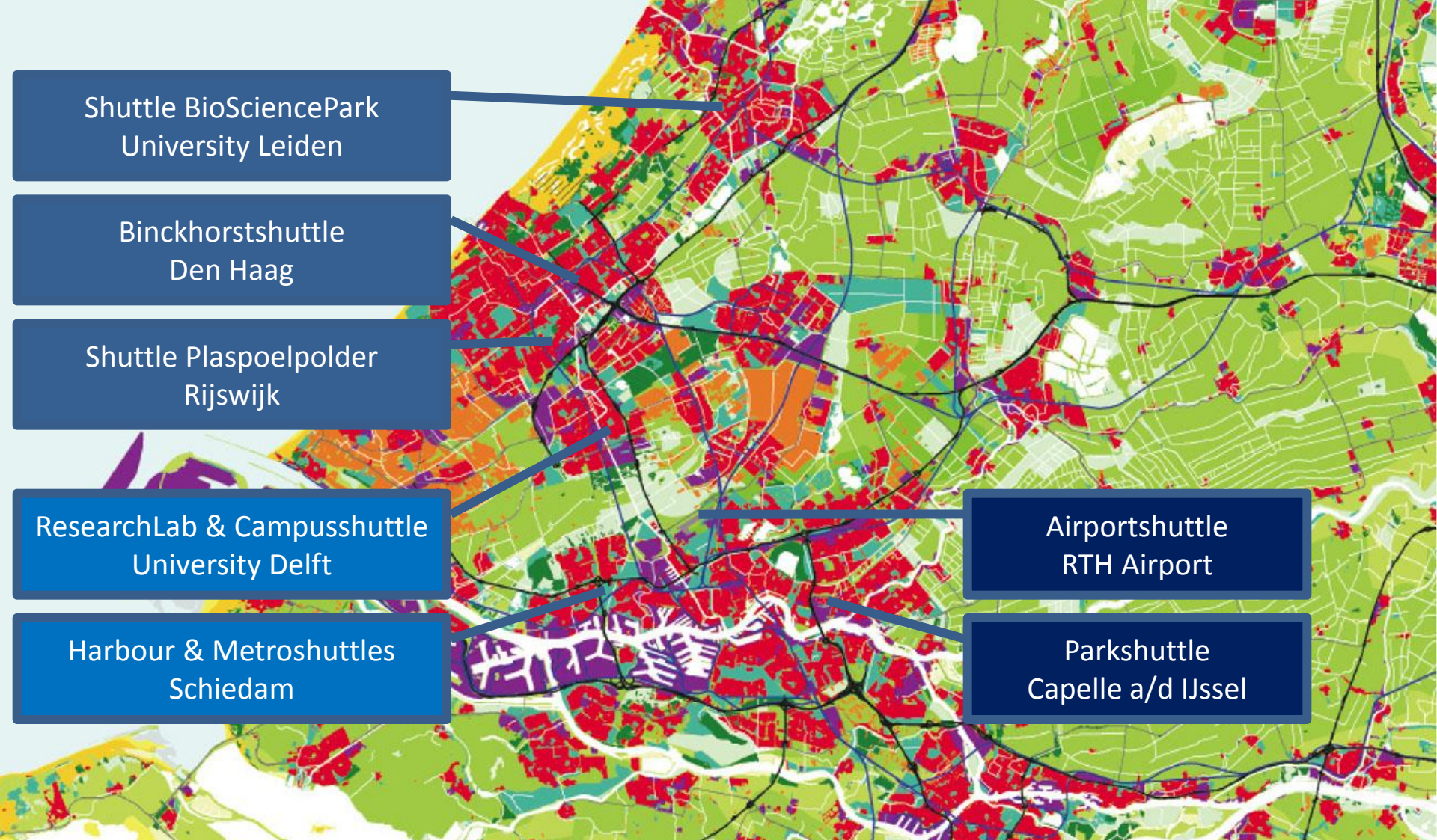


Metropoolregio
Rotterdam Den Haag

Roadmap Next Economy
Regionaal Investerings-
programma 2016

OESO rapport
2015





Shuttle BioSciencePark
University Leiden

Binckhorstshuttle
Den Haag

Shuttle Plaspoelpolder
Rijswijk

ResearchLab & Campusshuttle
University Delft

Harbour & Metroshuttles
Schiedam

Airportshuttle
RTH Airport

Parkshuttle
Capelle a/d IJssel

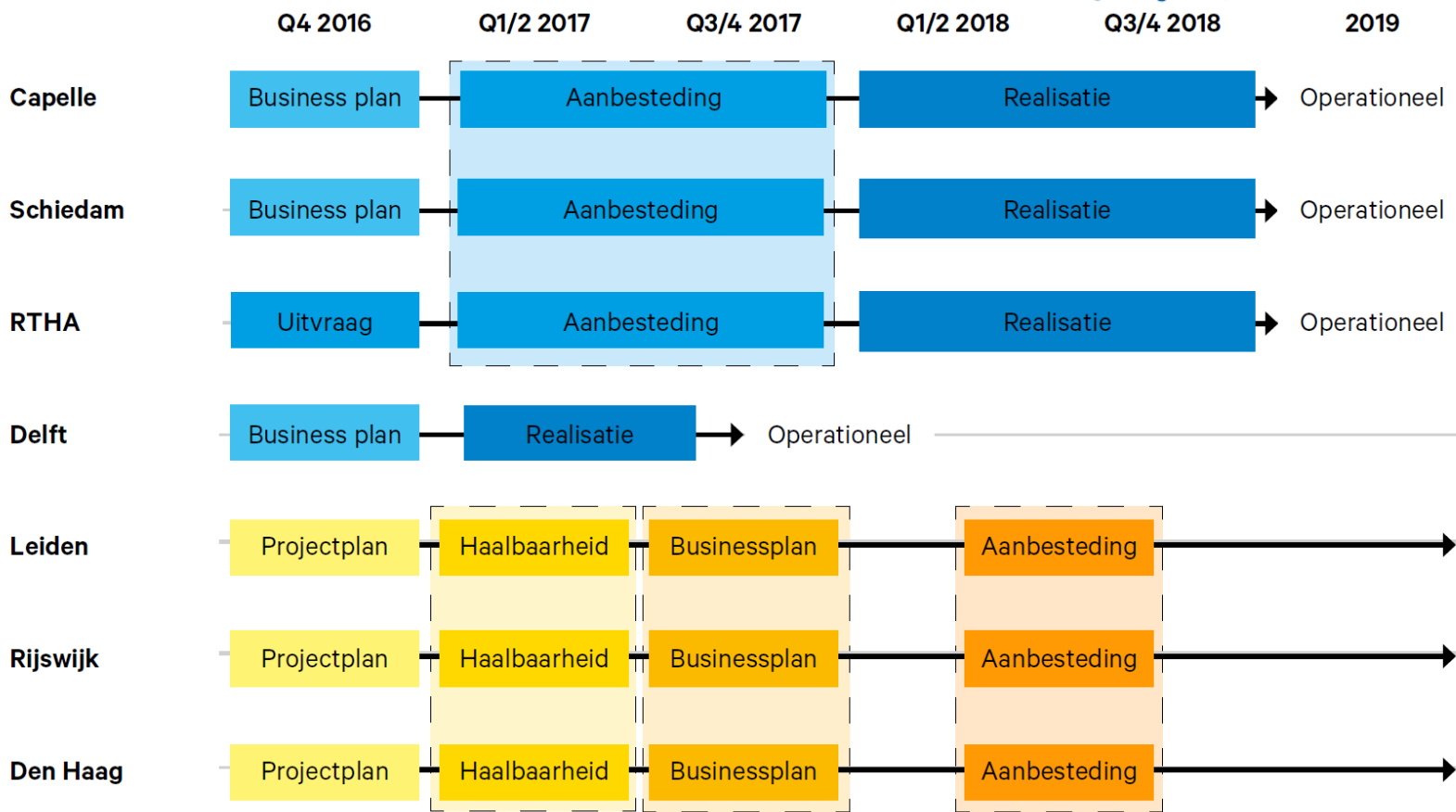


Metropoolregio
Rotterdam Den Haag

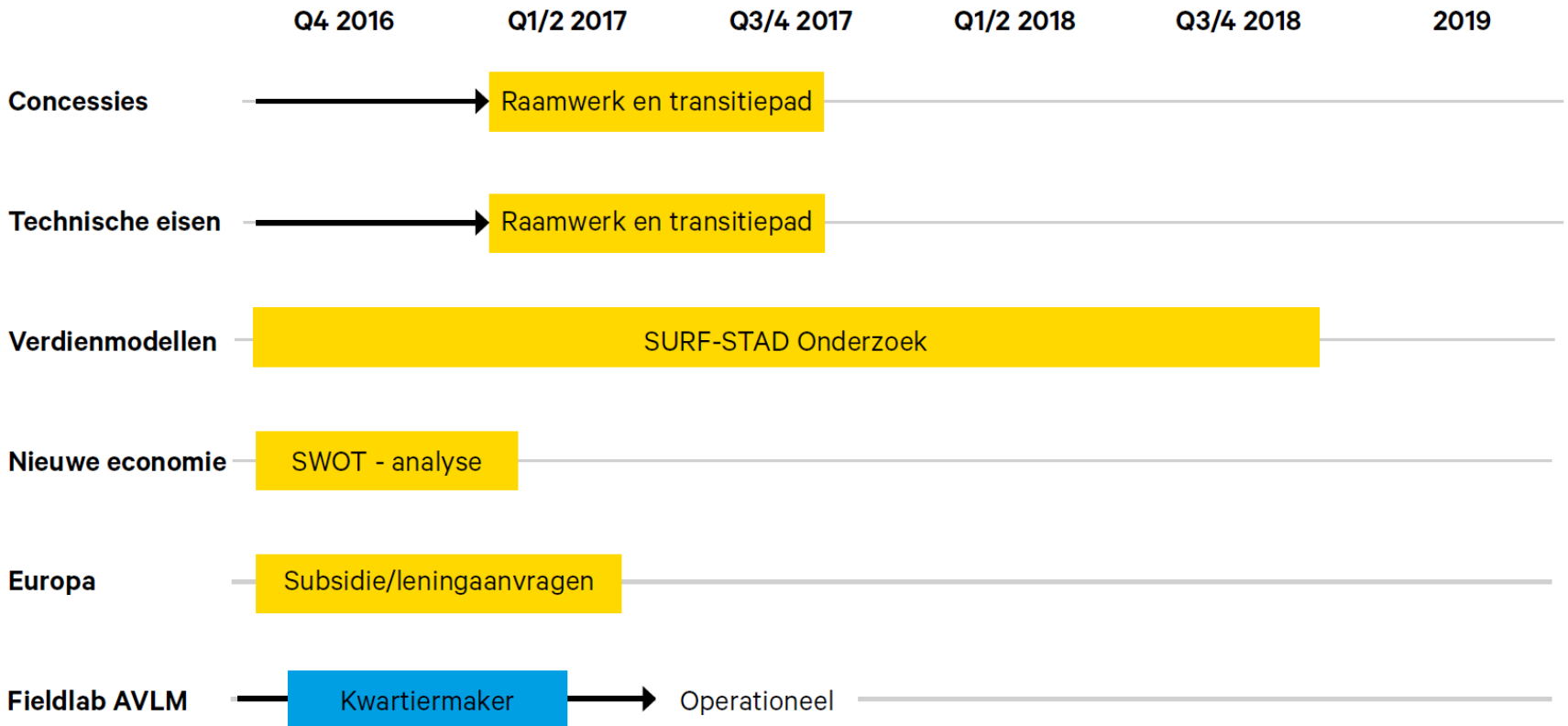
Automatisch Vervoer
Last Mile als RNE kans

Hoogwaardige
Werklocaties & campussen
Met Last Mile opgave

ROUTEKAART LOCATIES



ROUTEKAART GEZAMENLIJKE ACTIVITEITEN



Metropoolregio
Rotterdam Den Haag

Oktober 2016:
Plan van aanpak AVLM



cooperation



fun

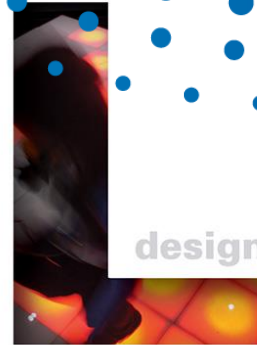


movement



sport

testing



design

services



business



profit

innovation

young & old



enjoy

stimulation



play equipment

knowledge

new products

Metropoolregio
Rotterdam Den Haag

Samenwerken & leren
Shared services
Validatie locaties
Systeemintegratie OV
Nieuwe Economie





Metropoolregio
Rotterdam Den Haag

Van _____





Metropoolregio
Rotterdam Den Haag

Naar _____

Vragen? _____

