



Kaart 11 Molenbiotopen

(behorend bij artikel 16 en 23)

Legenda

 Molenbiotoop (100 en 400 meter rondom molen)

 Bijzondere molenbiotoop

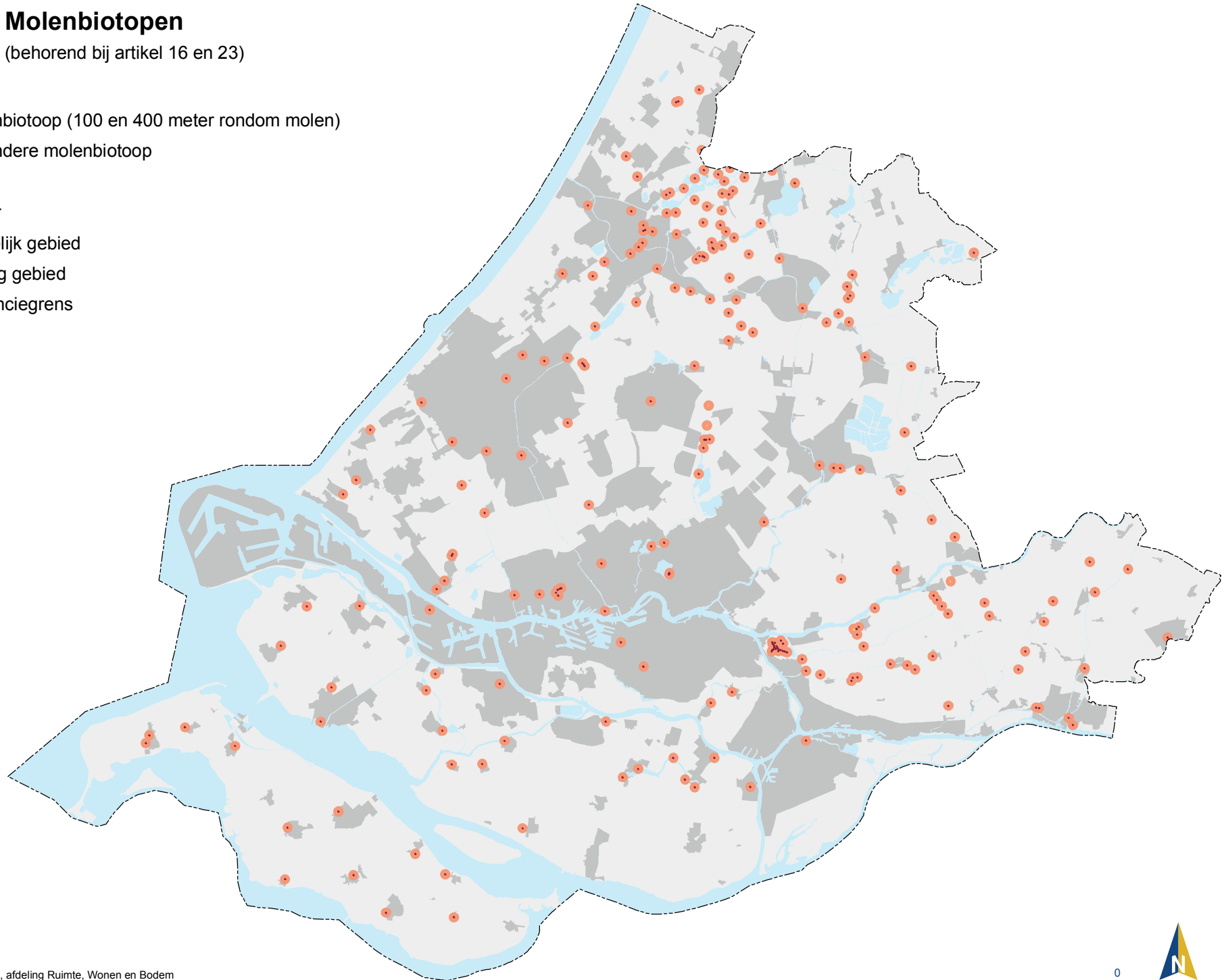
Overig

 Water

 Stedelijk gebied

 Overig gebied

 Provinciegrens

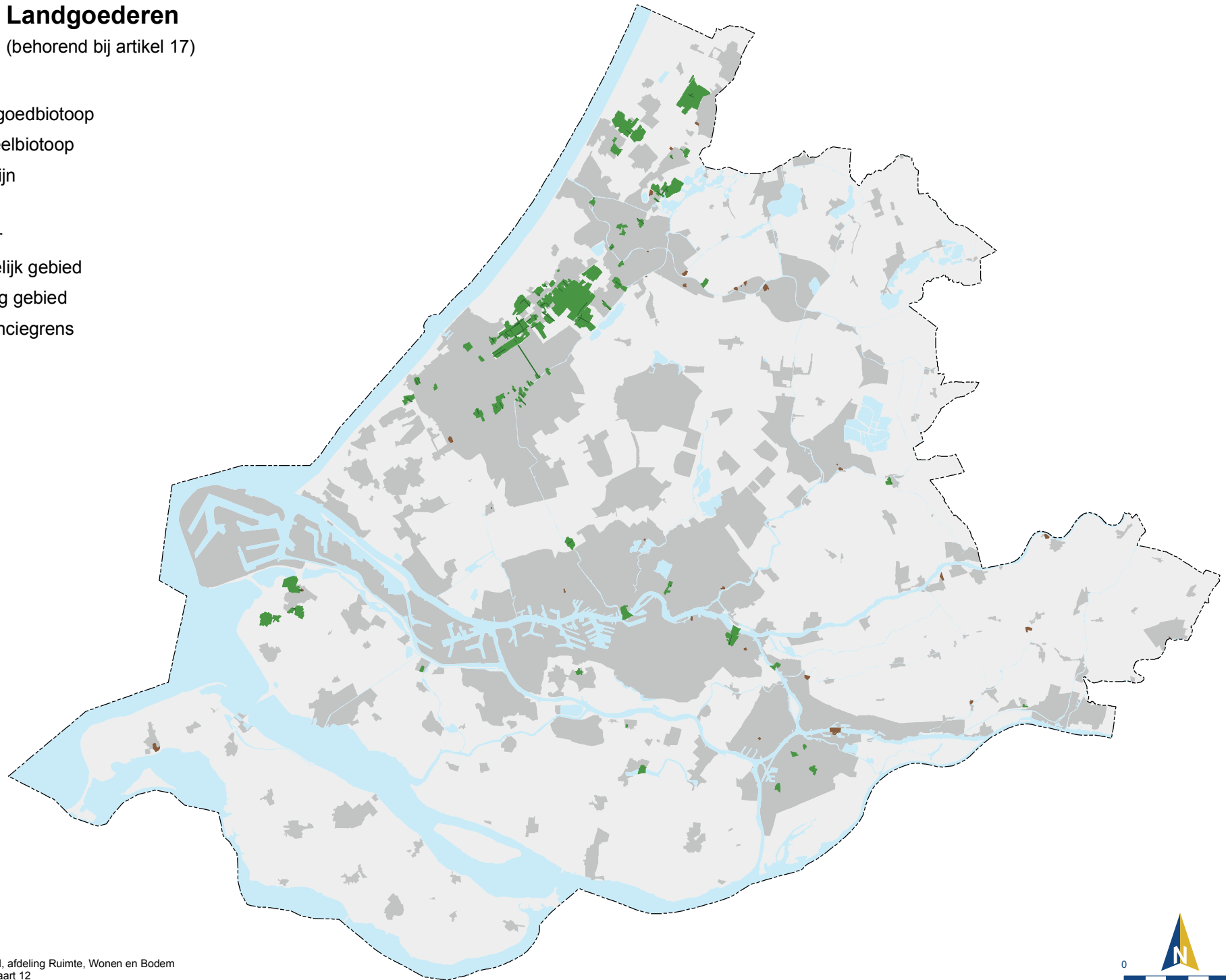


Kaart 12 Landgoederen

(behorend bij artikel 17)

Legenda



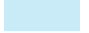

-  Landgoedbiotoop
-  Kasteelbiotoop
-  Zichtlijn
- Overig
 -  Water
 -  Stedelijk gebied
 -  Overig gebied
 -  Provinciegrens

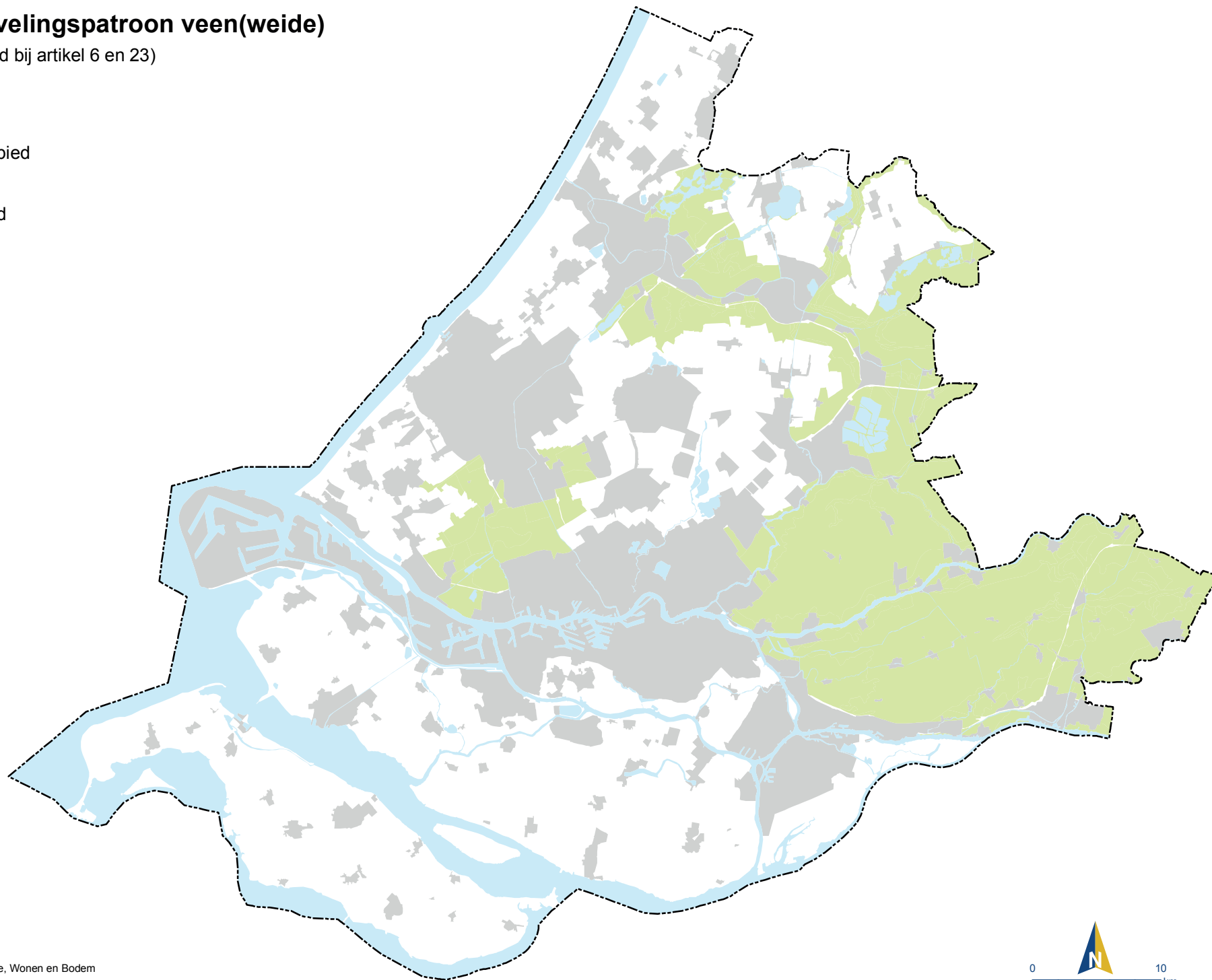


Kaart 13 Verkavelingspatroon veen(weide)

(behorend bij artikel 6 en 23)

Legenda



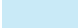

-  Veen(weide)gebied
- Overig
-  Stedelijk gebied
-  Water
-  Provinciegrens

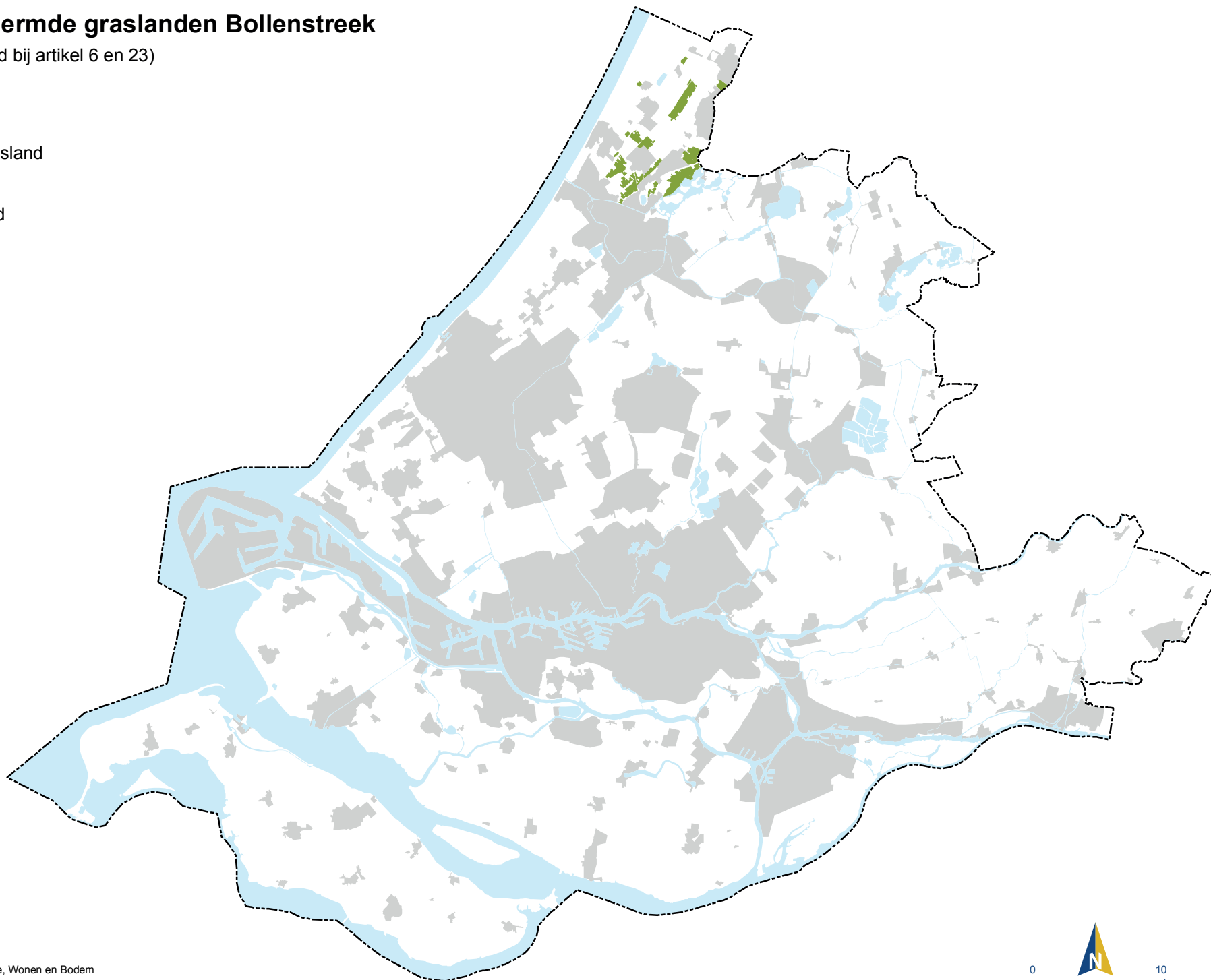


Kaart 14 Beschermd graslanden Bollenstreek

(behorend bij artikel 6 en 23)

Legenda






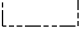
-  Beschermd grasland
- Overig
 -  Stedelijk gebied
 -  Water
 -  Provinciegrens

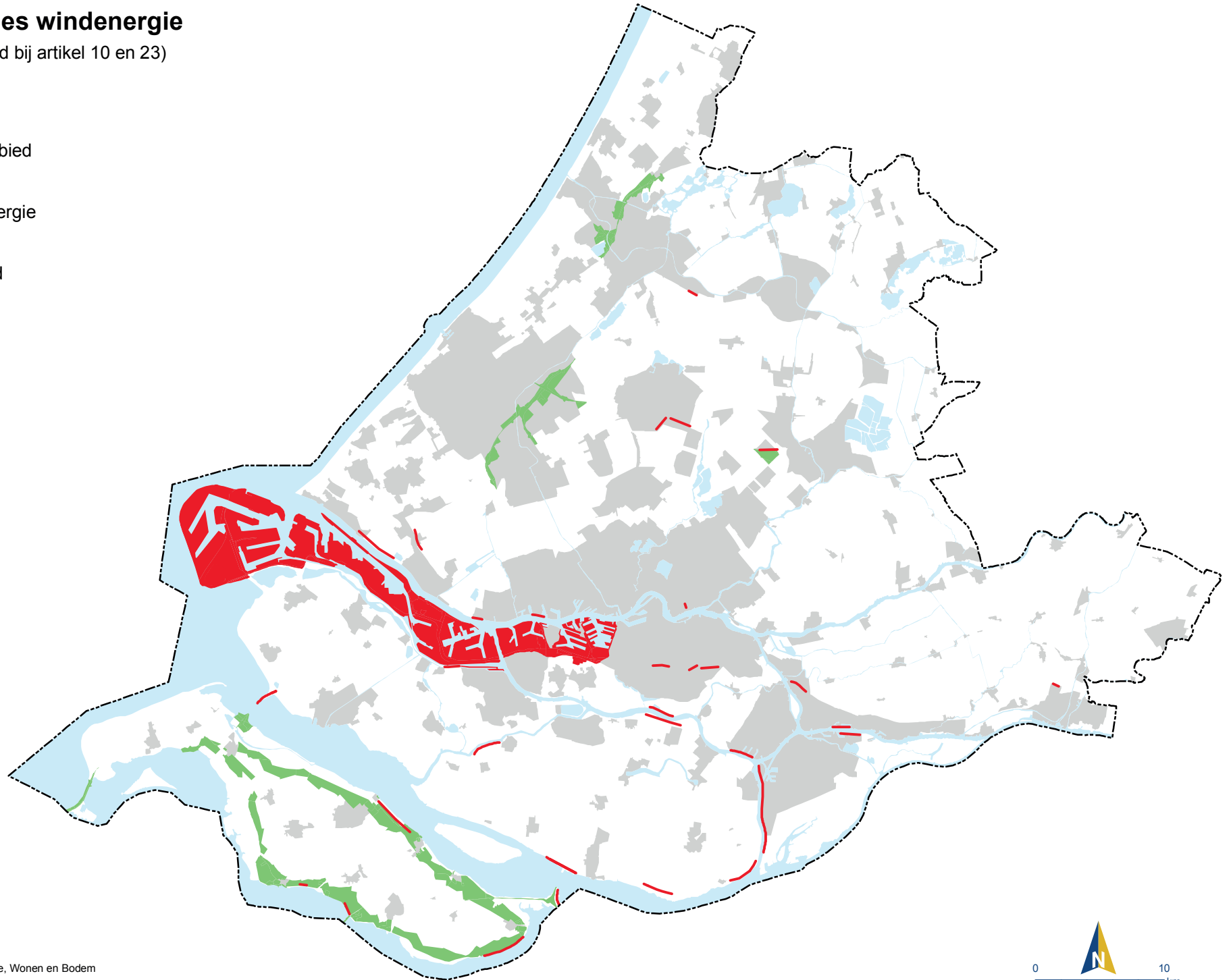


Kaart 15 Locaties windenergie

(behorend bij artikel 10 en 23)

Legenda


-  Concentratiegebied
-  Zoekgebied
-  Locatie windenergie
- Overig
 -  Stedelijk gebied
 -  Water
 -  Provinciegrens



Kaart 16 Buitendijks bouwen

(behorend bij artikel 12 en 23)

Legenda

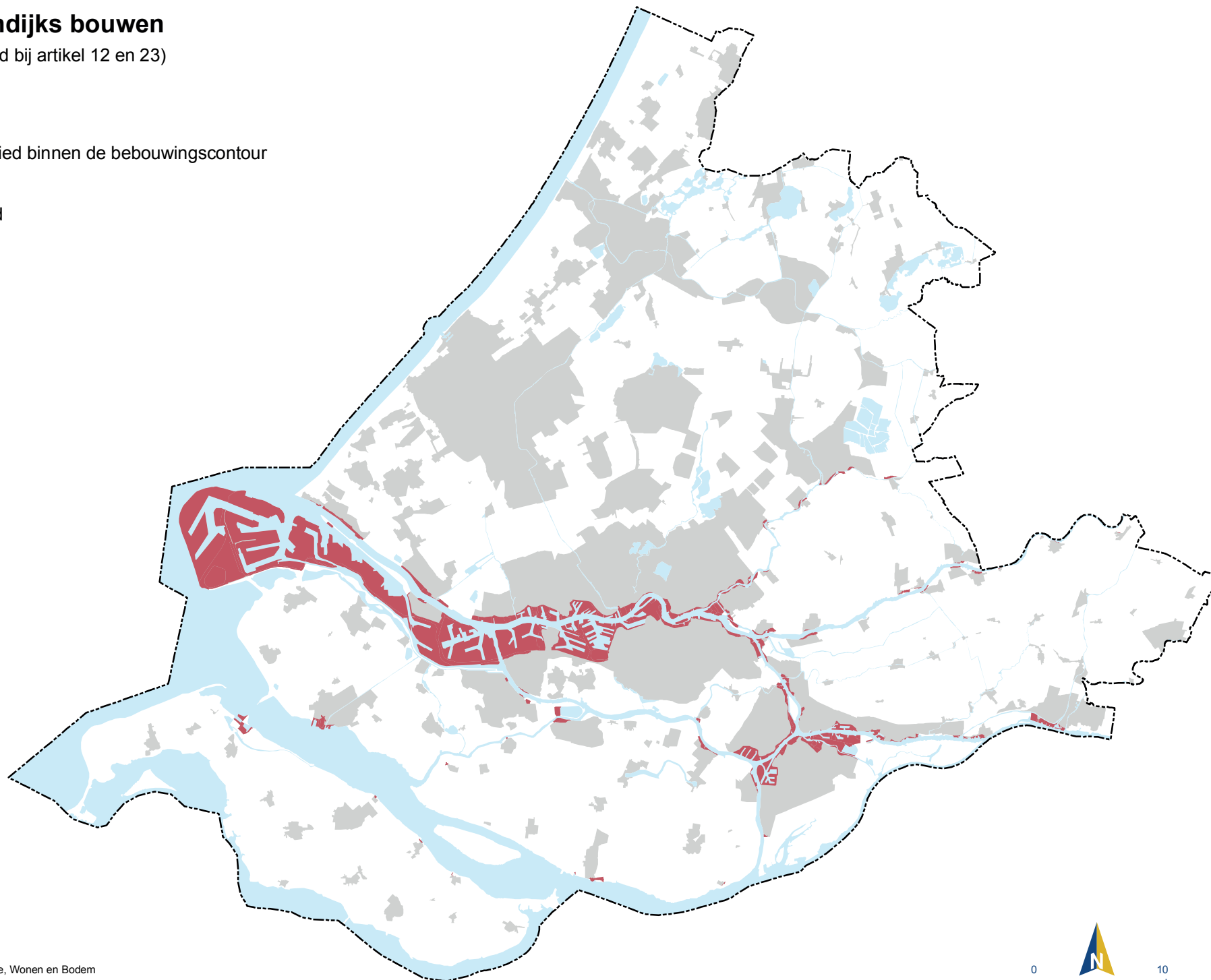
 Buitendijks gebied binnen de bebouwingscontour

Overig

 Stedelijk gebied

 Water



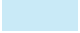
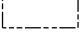
 Provinciegrens

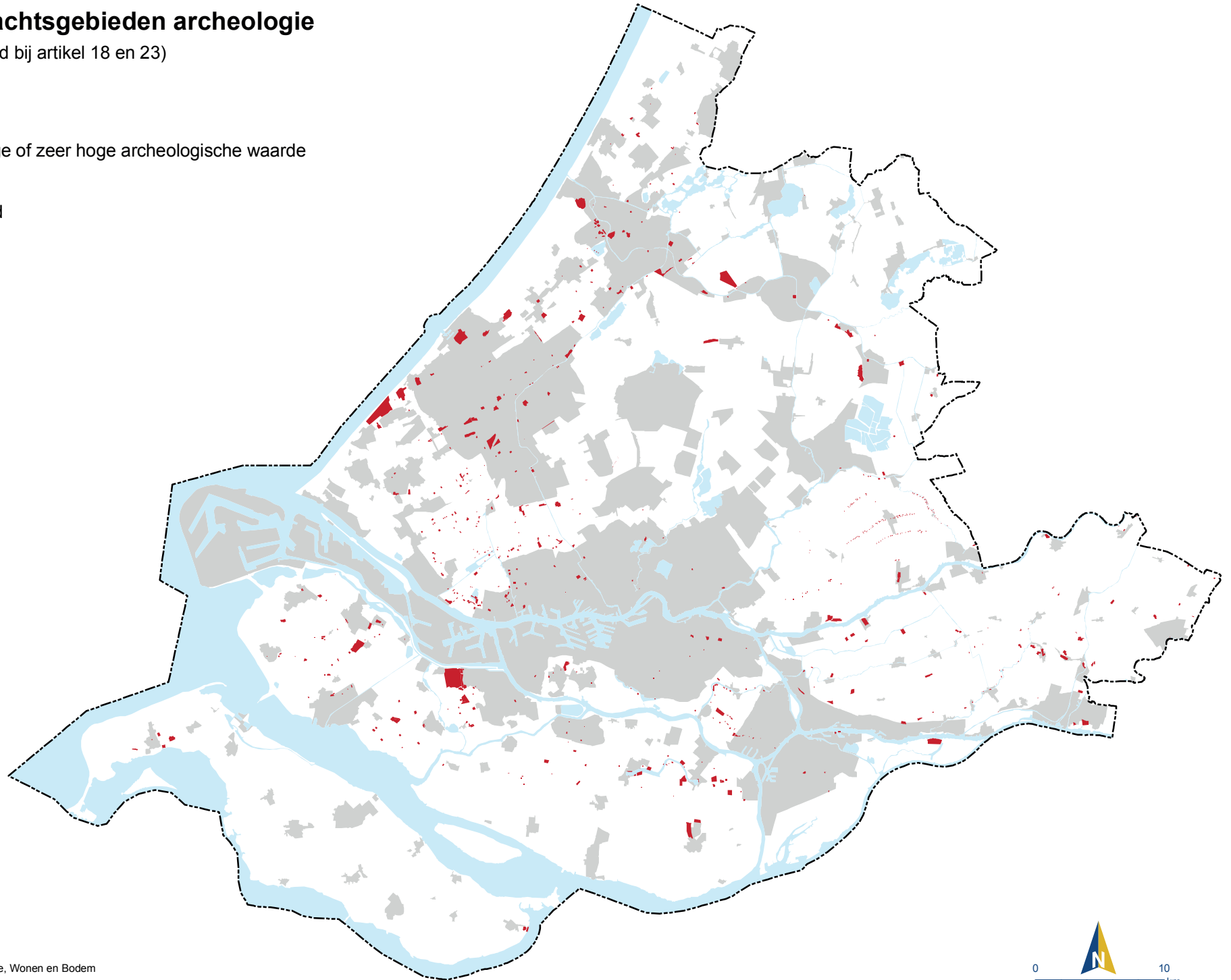


Kaart 17 Aandachtsgebieden archeologie

(behorend bij artikel 18 en 23)

Legenda



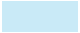
-  Terrein met hoge of zeer hoge archeologische waarde
- Overig
 -  Stedelijk gebied
 -  Water
 -  Provinciegrens

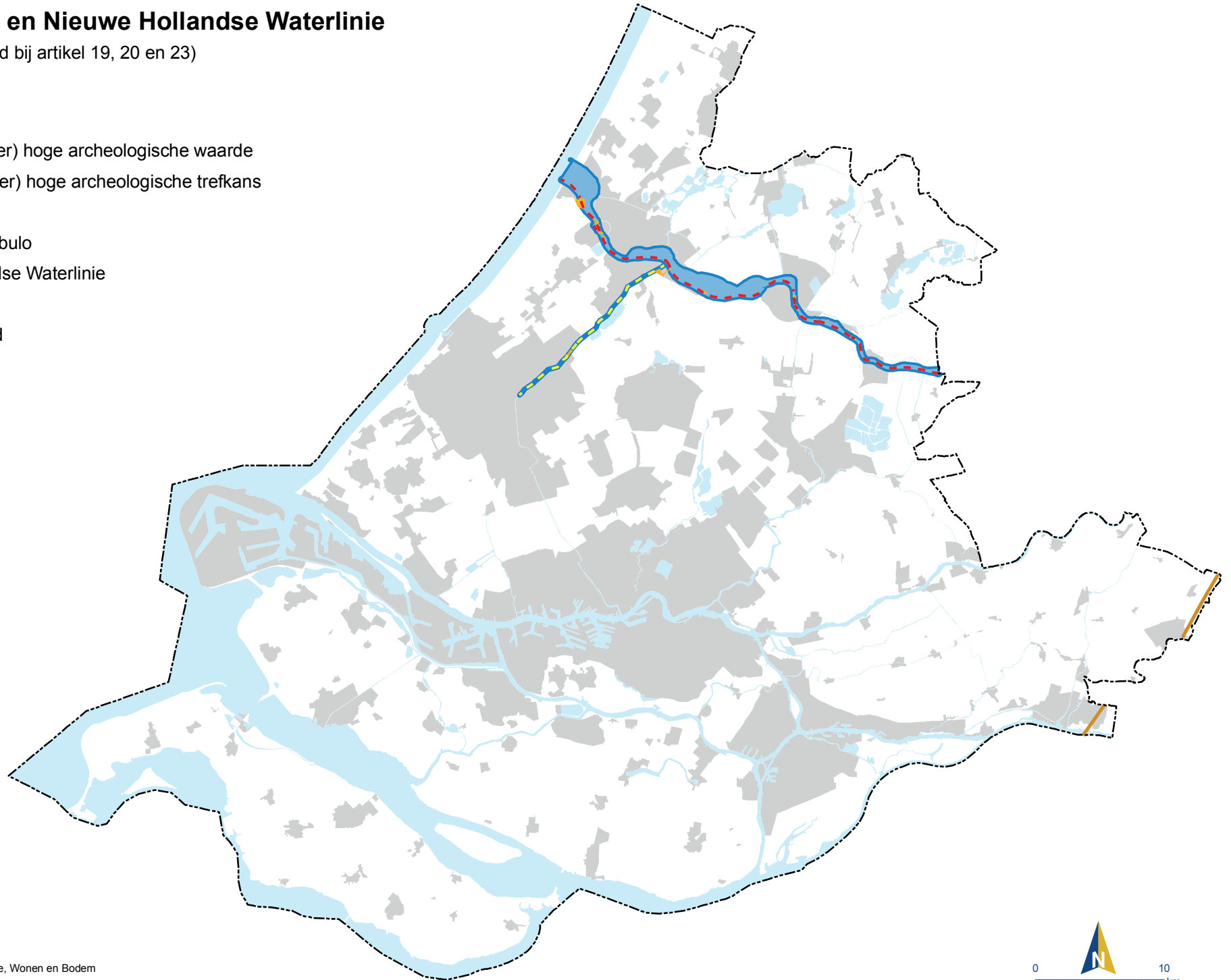


Kaart 18 Limes en Nieuwe Hollandse Waterlinie

(behorend bij artikel 19, 20 en 23)

Legenda

-  Terrein met (zeer) hoge archeologische waarde
-  Gebied met (zeer) hoge archeologische trefkans
-  Limes
-  Gracht van Corbulo
-  Nieuwe Hollandse Waterlinie
- Overig
 -  Stedelijk gebied
 -  Water
 -  Provinciegrens



Kaart 19 Provinciale vaarwegen

(behorend bij artikel 15 en 23)

Legenda

- Provinciale vaarweg, CEMT-klasse I
- Provinciale vaarweg, CEMT-klasse II
- Provinciale vaarweg, CEMT-klasse III
- Provinciale vaarweg, CEMT-klasse IV

Vrijwaringszone (minimumbreedte)	CEMT-klasse			
	I	II	III	IV
oeverstrook	1	2	2	5
recht vaarwegvak en buitenbocht stedelijk gebied	10	10	10	10
recht vaarwegvak en buitenbocht landelijk gebied	10	10	10	15
binnenbocht stedelijk en landelijk gebied	10	10	20	25

Overig

- Stedelijk gebied
- Water
- Provinciegrens

